

# Mainsail: 7000704 Jackson-1 Leopard 42 MainsailV1.des

Design Info  
=====

Design File:  
\\NAS\Engineering files\Queenie-Customer Order\Fareast Sails\2023 Order\Need Confrim Order\7000704 Jackson\7000704

Initial Design Date: 12/7/2023  
Boat:

Comments:  
tack angle 87 degree/ clew upper around 30cm from boom level

Client:

Design Data  
=====

## Main

### Measurements

Luff geodesic:	15.112m
Leech geodesic:	15.942m
Foot geodesic:	5.858m
Head geodesic:	0.200m
Upper width (MUW):	1.543m
Three-quarter width (MTW):	2.761m
Half width (MHW):	4.273m
Quarter width (MQW):	5.235m
Foot median:	15.473m
ORC Mainsail area:	57.912m?
Surface area:	60.772m?
Clew height:	-1.351m
Mast rake:	0.000m

### Battens

Position	Length	Roach	Angle	Luff	Leech	Full
90.094%	1.549m	0.705m	74.104?	13.574m	14.269m	Full
79.051%	2.730m	1.159m	72.112?	11.934m	12.520m	Full
66.200%	3.580m	1.216m	72.112?	9.993m	10.484m	Full
52.346%	4.290m	1.126m	72.112?	7.902m	8.290m	Full
36.685%	4.953m	0.937m	72.112?	5.539m	5.810m	Full
19.015%	5.430m	0.514m	72.112?	2.873m	3.012m	Full

### Reefing Points

1, Luff: 2.039m ; Leech: 2.072m ; Offset: 0.000m ; Number Eyelets: 4  
2, Luff: 4.153m ; Leech: 4.221m ; Offset: 0.000m ; Number Eyelets: 4

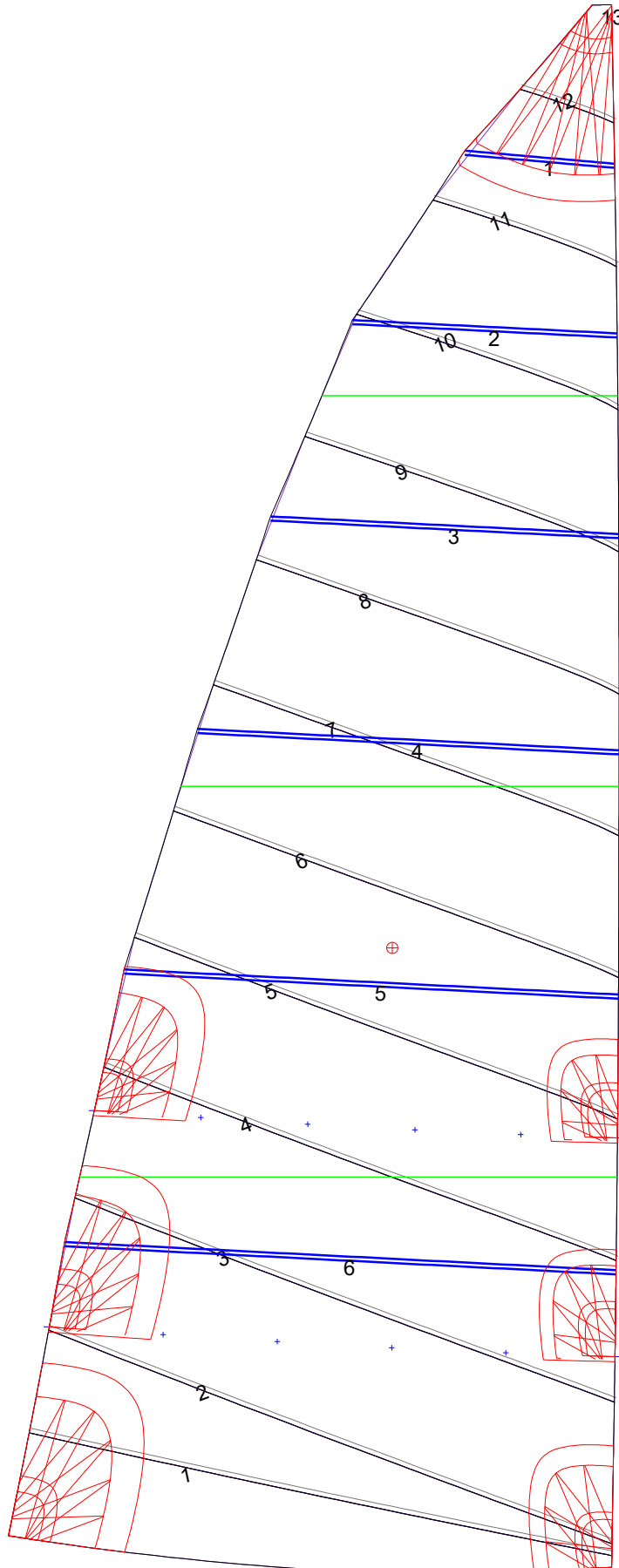
### Draft Stripes

1, Luff: 3.775m ; Leech: 3.559m ;  
2, Luff: 7.552m ; Leech: 7.467m ;  
3, Luff: 11.331m ; Leech: 11.457m ;

### Luff Curve

		Fanned Luff (@ 5.00% [0.292m])	Before BSeam
15.111m,	0.000m	100% (15.112m) :	0.000m
13.228m,	-0.035m	90% (13.601m) :	0.065m
11.334m,	-0.060m	80% (12.089m) :	0.128m
9.434m,	-0.071m	70% (10.579m) :	0.170m
7.556m,	-0.072m	60% (9.067m) :	0.184m
5.631m,	-0.066m	50% (7.556m) :	0.180m
3.778m,	-0.053m	40% (6.045m) :	0.160m
1.883m,	-0.030m	30% (4.534m) :	0.127m
0.000m,	0.000m	20% (3.022m) :	0.084m
		10% (1.511m) :	0.039m
		0% (0.000m) :	0.000m

# Mainsail: 7000704 Jackson-1 Leopard 42 MainsailV1.des



Seam Allowances			
Zone: 1	Split	Radial	Cross
	0.046m	0.046m	0.046m

Edge Excesses			
Sail:	Luff	Leech	Foot
	0.000m	0.000m	0.000m

Total Seam Lengths (m)

Horizontal	50.19
Radial/Vertical	0.00
Bi-Radial Split	0.00

Materials

Material	Area (m <sup>2</sup> )	Panels
Material 1	60.78	1,2,3,4,5 6,7,8,9,10 11,12,13