

# Genoa: 8000109 John-2 Corsair jib.des

Design Info  
=====

Design File:  
\\NAS\Engineering files\Queenie-Customer Order\Fareast Sails\2024 Orders\Need to be Confirmed\8000109 John\800

Initial Design Date: 18/1/2024  
Boat:

Comments:

Client:

Design Data  
=====

Genoa

## Measurements

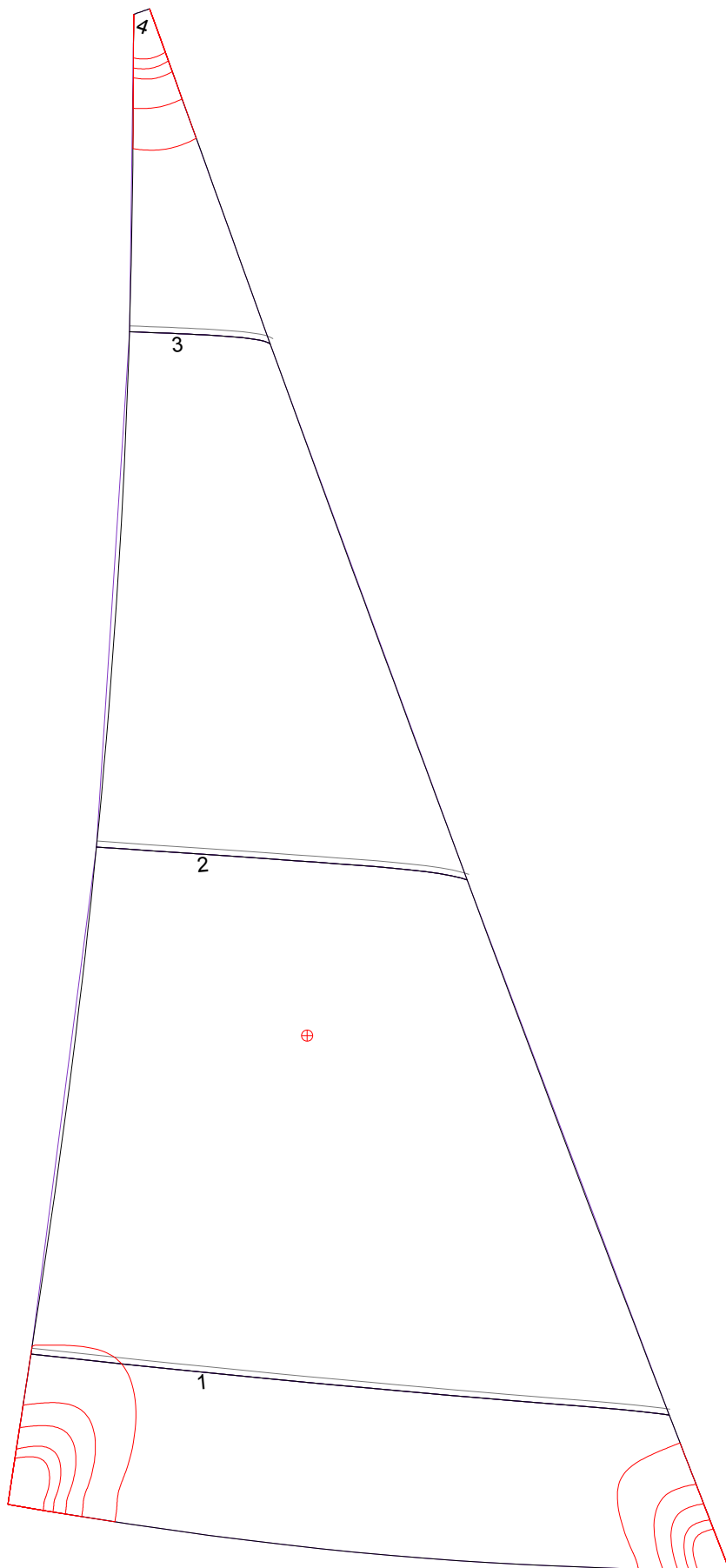
Luff geodesic:	4.250m
Leech geodesic:	3.850m
Foot geodesic:	1.866m
Headboard width:	0.045m
Luff perpendicular (HLP):	1.700m
Upper width (HUW):	0.221m
Three-quarter width (HTW):	0.406m
Half width (HHW):	0.806m
Quarter width (HQW):	1.241m
Foot median:	3.992m
ORC Headsail area:	3.541m?
IRC Headsail area:	3.532m?
Surface area:	3.561m?
Forestay height:	4.900m
J:	1.820m

## Luff Curve

4.250m,	0.000m
3.397m,	0.018m
2.546m,	0.025m
1.696m,	0.023m
0.847m,	0.014m
0.000m,	0.000m

Fanned Luff (@ 5.00% [0.092m])		Before BSeam
100% (4.250m) :	0.000m	-0.000m
90% (3.825m) :	-0.008m	0.004m
80% (3.400m) :	-0.017m	0.006m
70% (2.975m) :	-0.022m	0.008m
60% (2.550m) :	-0.025m	0.011m
50% (2.125m) :	-0.026m	0.013m
40% (1.700m) :	-0.024m	0.013m
30% (1.275m) :	-0.022m	0.012m
20% (0.850m) :	-0.016m	0.009m
10% (0.424m) :	-0.009m	0.006m
0% (0.000m) :	0.000m	0.000m

# Genoa: 8000109 John-2 Corsair jib.des



Seam Allowances			
Zone: 1	Split	Radial	Cross
	0.015m	0.015m	0.015m

Edge Excesses			
Sail:	Luff	Leech	Foot
	0.000m	0.000m	0.000m

### Total Seam Lengths (m)

Horizontal	3.05
Radial/Vertical	0.00
Bi-Radial Split	0.00

### Materials

Material	Area (m <sup>2</sup> )	Panels
Material 1	3.58	1,2,3,4